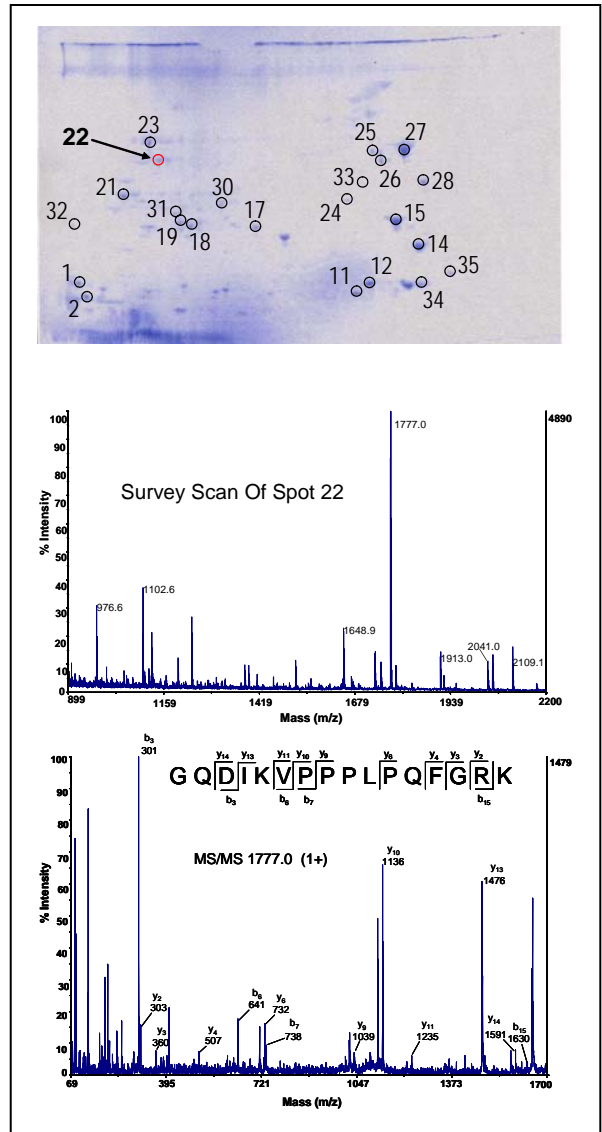


2nd OSU ALS Mass Spec Lab Orientation Week Sept 17 – 21, 2007

This year we offer for the second time a Mass Spec Lab orientation week. This orientation is intended to promote interactions between the staff of the mass spec lab and students, research assistants, associates and faculty that have an interest in implementing mass spectrometry into their research activities.

The orientation consists of lectures covering some of the fundamental concepts in mass spectrometry, introductions into the instrumentation available at OSU's mass spec lab, applications and sample preparation hints, as well as instrument and software demonstrations. Program is outlined on page 2.

Everyone is welcome!
Please sign up for the orientation by Friday Sept 07, 2007; send brief email to claudia.maier@oregonstate.edu.



If you have questions or suggestions please call 541-737-9533 or email claudia.maier@oregonstate.edu.

2nd OSU ALS Mass Spectrometry Lab Orientation, September 17 – 21, 2007

Program

Lectures are tentatively held in ALS 1019; pending on the number of people that sign up;

Day 1 (Mon)	9:00 – 9:15	Overview Program, ALS MS Lab
	9:15-10:00	Basic Concepts in Mass Spec
	10:15-11:30	Overview Ionization Techniques and Mass Analyzers
Day 2 (Tue)	9:00 – 10:30	Negative Ion Mass Spec: Theory and Applications
	10:45 – 11:30	Jeol Sector MS(HR-MS, EI/CI/FAB and GC-MS capabilities)
Day 3 (Wed)	9:00 – 9:45	AB Triple Quad/Qtrap
	9:45 – 10:30	Small Molecule Analysis
	10:45 – 11:30	Quantitation
Day 4 (Thr)	9:00 – 10:30	Protein MS/Proteomics
	10:45 – 11:30	H/D Exchange Mass Spectrometry
Day 5 (Fri)	9:00 – 9:45	ABI 4700 Proteomics Analyzer
	9:45 – 10:30	Waters/Micromass LC-T
	10:45 – 11:30	Waters/Micromass qToF

Instrument & Software Demonstrations; 1:30 – 4:00; Mon-Fri (in ALS 0085)

Station 1	Mike	Sample Prep & NanoLC ABI 4700 & GPS Explorer/Mascot/Scaffold	Mon-Fri
Station 2	Brian	QToF & MassLynx Mascot/Scaffold	Mon-Fri
Station 3	Jeff	Jeol HR-MS	Mon-Tue
Station 4	Jeff	API 365 / Qtrap	Wed-Thur
Station 5	Jeff	LC-T	Fri

Breaks: 10:00 Mon Coffee, cookies
10:30 Tue-Fri Coffee, cookies

Lunch: 11:30-1:30 Mon-Thurs "Brown Bag";
Restaurants are located on OSU campus and Monroe Av;
11:45 Fri Pizza & soft drinks;

Helpful links: <http://mass-spec.science.oregonstate.edu/>
http://oregonstate.edu/cw_tools/campusmap/
<http://www.visitcorvallis.com/>